



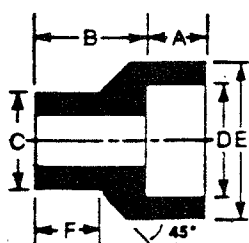
Socket Weld

Reducer Inserts - Class 3000

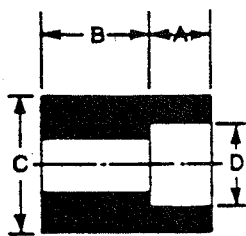
3000 POUND

For use with sch. 40 & 80 pipe

NOMINAL PIPE SIZES	DIA. C	DIA. D	INSERT TYPE	DIMENSIONS			
				A	B	E	F
1/2 x 3/8	.850	.690	1	7/16	13/16	1 1/6	5/8
1/2 x 1/4	.850	.555	1	3/8	13/16	7/8	11/16
1/2 x 1/8	.850	.420	2	3/8	13/16	-	-
3/4 x 1/2	1.060	.855	1	1/2	7/8	1 1/4	11/16
3/4 x 3/8	1.060	.690	2	7/16	5/8	-	-
3/4 x 1/4	1.060	.555	2	3/8	11/16	-	-
3/4 x 1/8	1.060	.420	2	3/8	1/16	-	-
1 x 3/4	1.325	1.065	1	9/16	15/16	1 1/2	3/4
1 x 1/2	1.325	.855	2	1/2	5/8	-	-
1 x 3/8	1.325	.690	2	7/16	11/16	-	-
1 x 1/4	1.325	.555	2	3/8	3/4	-	-
1 1/4 x 1	1.670	1.330	1	5/8	1	1 13/16	13/16
1 1/4 x 3/4	1.670	1.065	2	9/16	11/16	-	-
1 1/4 x 1/2	1.670	.855	2	1/2	3/4	-	-
1 1/2 x 1 1/4	1.910	1.675	1	11/16	1 1/8	2 1/4	7/8
1 1/2 x 1	1.910	1.330	2	5/8	11/16	-	-
1 1/2 x 3/4	1.910	1.065	2	9/16	3/4	-	-
1 1/2 x 1/2	1.910	.855	2	1/2	13/16	-	-
2 x 1 1/2	2.385	1.915	1	3/4	1 1/4	2 1/2	1
2 x 1 1/4	2.385	1.675	2	11/16	13/16	-	-
2 x 1	2.385	1.330	2	5/8	7/8	-	-
2 x 3/4	2.385	1.065	2	9/16	15/16	-	-
2 x 1/2	2.385	.855	2	1/2	1	-	-
2 1/2 x 2	2.895	2.406	1	7/8	1 13/16	3	1 1/2
2 1/2 x 1 1/2	2.895	1.915	2	3/4	1 3/8	-	-
2 1/2 x 1 1/4	2.895	1.675	2	11/16	1 7/16	-	-
2 1/2 x 1	2.895	1.330	2	5/8	1 1/2	-	-
3 x 2 1/2	3.520	2.906	1	7/8	1 1/2	3 5/8	1 1/4
3 x 2	3.520	2.406	2	7/8	1	-	-
3 x 1 1/2	3.520	1.915	2	3/4	1 1/8	-	-
3 x 1 1/4	3.520	1.675	2	11/16	1 3/16	-	-
3 x 1	3.520	1.330	2	5/8	1 1/4	-	-
4 x 3	4.530	3.535	2	1 1/16	1 5/16	-	-
4 x 2 1/2	4.530	2.906	2	7/8	1 1/2	-	-
4 x 2	4.530	2.406	2	7/8	1 1/2	-	-
4 x 1 1/2	4.530	1.915	2	3/4	1 5/8	-	-
4 x 1 1/4	4.530	1.675	2	11/16	1 11/16	-	-
4 x 1	4.530	1.330	2	5/8	1 3/4	-	-



TYPE 1



TYPE 2

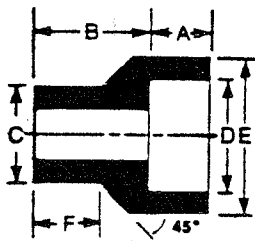


Socket Weld

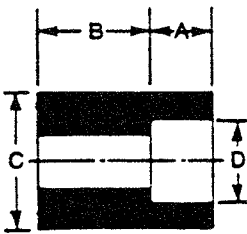
Reducer Inserts - Class 6000

6000 POUND

For use with sch. 160 pipe



TYPE 1



TYPE 2

NOMINAL PIPE SIZES	DIA. C	DIA. D	INSERT TYPE	DIMENSIONS			
				A	B	E	F
1/2 x 3/8	.850	.690	1	7/16	7/8	1 5/8	11/16
1/2 x 1/4	.850	.555	1	3/8	13/16	1	11/16
1/2 x 1/8	.850	.420	1	3/8	13/16	1 1/16	11/16
3/4 x 1/2	1.060	.855	1	1/2	1	1 1/2	3/4
3/4 x 3/8	1.060	.690	1	7/16	7/8	1 5/16	3/4
3/4 x 1/4	1.060	.555	2	3/8	7/8	-	-
3/4 x 1/8	1.060	.420	2	3/8	7/8	-	-
1 x 3/4	1.325	1.065	1	9/16	1 1/8	1 3/4	13/16
1 x 1/2	1.325	.855	1	1/2	1 1/8	1 1/2	13/16
1 x 3/8	1.325	.690	2	7/16	7/8	-	-
1 x 1/4	1.325	.555	2	3/8	15/16	-	-
1 1/4 x 1	1.670	1.330	1	5/8	13/16	2 1/4	7/8
1 1/4 x 3/4	1.670	1.065	2	9/16	13/16	-	-
1 1/4 x 1/2	1.670	.855	2	1/2	7/8	-	-
1 1/2 x 1 1/4	1.910	1.675	1	11/16	1 3/8	2 1/2	1
1 1/2 x 1	1.910	1.330	1	5/8	1 1/8	2 1/4	1
1 1/2 x 3/4	1.910	1.065	2	9/16	1	-	-
1 1/2 x 1/2	1.910	.855	2	1/2	1 1/16	-	-
2 x 1 1/2	2.385	1.915	1	3/4	1 13/16	3	1 9/16
2 x 1 1/4	2.385	1.675	2	11/16	15/16	-	-
2 x 1	2.385	1.330	2	5/8	1	-	-
2 x 3/4	2.385	1.065	2	9/16	1 1/16	-	-
2 x 1/2	2.385	.855	2	1/2	1 1/8	-	-
2 1/2 x 2	2.895	2.406	1	7/8	1 11/16	3 5/8	1 1/4
2 1/2 x 1 1/2	2.895	1.915	2	3/4	1 1/4	-	-
2 1/2 x 1 1/4	2.895	1.675	2	11/16	1 5/16	-	-
2 1/2 x 1	2.895	1.330	2	5/8	1 3/8	-	-
3 x 2 1/2	3.520	2.906	1	7/8	1 13/16	4 1/4	1 3/8
3 x 2	3.520	2.406	2	7/8	1 3/8	-	-
3 x 1 1/2	3.520	1.915	2	3/4	1 1/2	-	-
3 x 1 1/4	3.520	1.675	2	11/16	1 9/16	-	-
3 x 1	3.520	1.330	2	5/8	1 5/8	-	-
4 x 3	4.530	3.535	1	1	2 9/16	5	1 3/4
4 x 2 1/2	4.530	2.906	2	7/8	2	-	-
4 x 2	4.530	2.406	2	7/8	2	-	-
4 x 1 1/2	4.530	1.915	2	3/4	2 1/8	-	-
4 x 1 1/4	4.530	1.675	2	11/16	2 3/16	-	-
4 x 1	4.530	1.330	2	5/8	2 1/4	-	-



**Socket Weld Couplings,
 Reducers and Caps - Class 3000 and 6000**

DIMENSIONS (Inches)

3000 POUND

NOMINAL PIPE SIZE	1/2	3/4	1	1 1/4	1 1/2	2	2 1/2	3	4
A	1 3/8	1 1/2	1 3/4	1 7/8	2	2 1/2	2 1/2	2 3/4	3
B	1 1/4	1 1/2	1 13/16	2 1/4	2 1/2	3	3 5/8	4 5/16	5 1/2
C	.855	1.065	1.330	1.675	1.915	2.406	2.906	3.535	4.545
D	1/2	9/16	5/8	11/16	3/4	7/8	7/8	1	1 1/8
E	3/8	3/8	1/2	1/2	1/2	3/4	3/4	3/4	3/4
F	7/8	1	1 1/16	1 3/16	1 1/4	1 1/2	1 9/16	1 13/16	2 1/16

6000 POUND

A	1 3/8	1 1/2	1 3/4	1 7/8	2	2 1/2	2 1/2	2 3/4	3
B	1 1/2	1 3/4	2 1/4	2 1/2	3	3 5/8	4 1/4	5	6 1/4
C	.855	1.065	1.330	1.675	1.915	2.406	2.906	3.535	4.545
D	1/2	9/16	5/8	11/16	3/4	7/8	7/8	1	1 1/8
E	3/8	3/8	1/2	1/2	1/2	3/4	3/4	3/4	3/4
F	1	1 1/16	1 1/4	1 5/16	1 3/8	1 5/8	1 11/16	1 15/16	2 5/16

WEIGHTS (Pounds)

3000 POUND

COUPLING	.188	.313	.563	.813	1	2	2.625	3.875	6.625
REDUCER	.188	.313	.563	.813	1	2	2.625	3.875	6.625
HALF COUPLING	.188	.313	.563	.813	1	2	2.625	3.875	6.625
PIPE CAP	.188	.313	.375	.813	1.125	1.688	3	3.625	6.688

6000 POUND

COUPLING	.375	.563	1	1.438	2	3.875	5.50	6.625	13.125
REDUCER	.375	.563	1	1.438	2	3.875	5.50	6.625	13.125
HALF COUPLING	.375	.563	1	1.438	2	3.875	5.50	6.625	13.125
PIPE CAP	.375	.50	1.125	1.125	2.25	3.50	5.625	6	13.50

